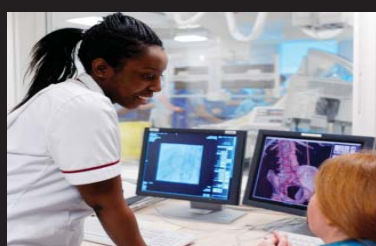


Postgraduate Certificates at the University of Suffolk



An artist's impression of the new 'Health and Wellbeing Building' opening early 2022.

At the University of Suffolk, we are passionate about the development of diagnostic radiographers and the profession of radiography. Our recently developed and approved Postgraduate courses are aimed at scaffolding the journey for advanced clinical practice in the areas of Radiographic Reporting of the Chest and Abdomen, Computed Tomography (CT), Magnetic Resonance Imaging (MRI) and Paediatric Imaging.

On successful completion of these courses, you will be awarded 60 credits at Master's Level. The courses can lead you on to undertake a full MSc Professional Practice: Advancing Radiography Practice at the University which is due to start in September 2022 (subject to approval).

If you are a radiographer interested in developing your clinical expertise and increasing your knowledge and understanding in any of these specialist areas, please feel free to contact me for any further information or alternatively each of the course leaders below:

Chris Cobb - c.cobb@uos.ac.uk, Course Leader for PgC in Radiographic Reporting of the Chest and Abdomen

Nancy Sims - n.sims2@uos.ac.uk, Course Leader for PgC in Computed Tomography
Deana Hazeldene - d.hazeldene2@uos.ac.uk, Course Leader for PgC in Magnetic Resonance Imaging

Dr Jane Harvey-Lloyd - j.harvey-lloyd@uos.ac.uk, Course Leader for PgC in Paediatric Imaging

We are excited to be playing a pivotal role in your future professional development and look forward to meeting you all soon.

Dr Jane Harvey-Lloyd
Postgraduate Lead for Radiography

Postgraduate Certificate Modules

| | Module 1 | Module 2 | Module 3 |
|--|--|---|--|
| PGC Computed Tomography | Fundamentals of CT 20 credits Mandatory Module | CT Principles and Practice: Work-based Learning 20 credits Mandatory Module | Managing Effective Care in CT 20 credits Mandatory Module |
| PGC Magnetic Resonance Imaging | Fundamentals of MRI 20 credits Mandatory Module | MRI Principles and Practice: Work-based Learning 20 credits Mandatory Module | Managing Effective Care in MRI 20 credits Mandatory Module |
| PGC Paediatric Imaging | Children's Holistic Development 20 credits Mandatory Module | Projection Imaging of the Paediatric Patient 20 credits Mandatory Module | Suspected Physical Abuse in Paediatrics 20 credits Mandatory Module |
| PGC Radiographic Reporting of the Chest and Abdomen | Radiographic Reporting of the Abdomen 30 credits Mandatory Module | Radiographic Reporting of the Chest 30 credits Mandatory Module | |

Please visit www.uos.ac.uk for more information.